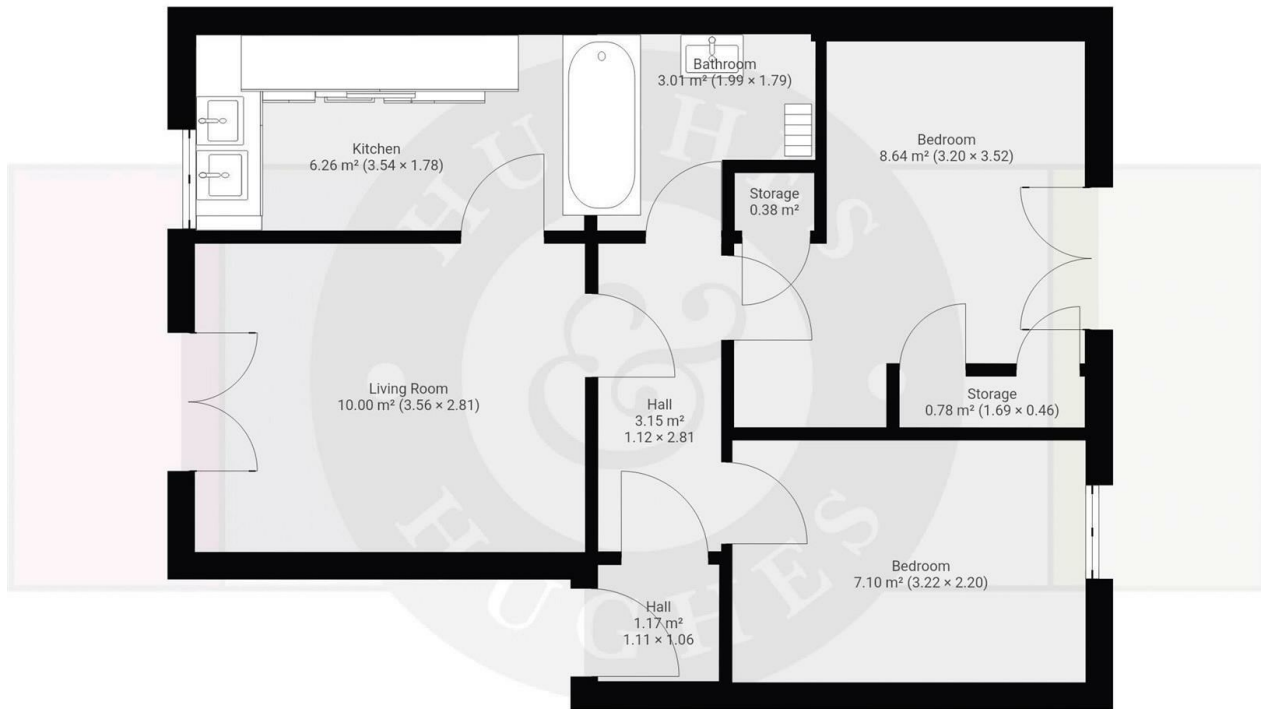




## 21 Queens Square, Chippenham, Wiltshire, SN15 3BL

£1,050 PCM

- Two Bedroom Apartment Ideally Located Within East Reach of All Local Amenities
- Brand New Contemporary Kitchen
- Neutrally Freshly Decorated Throughout
- New Carpets Being Fitted Early Jan
- Designated Allocated Permitted Parking
- AVAILABLE MID JAN



THIS FLOORPLAN IS PROVIDED WITHOUT WARRANTY OF ANY KIND. SENSOPIA DISCLAIMS ANY WARRANTY INCLUDING, WITHOUT LIMITATION, SATISFACTORY QUALITY OR ACCURACY OF DIMENSIONS.



## Directions

## Viewings

Viewings by arrangement only. Call 01249 466999 to make an appointment.

## Council Tax Band

B

## EPC Rating:

Energy Efficiency Rating		
	Current	Potential
<i>Very energy efficient - lower running costs</i>		
(92 plus) <b>A</b>		
(81-91) <b>B</b>		
(69-80) <b>C</b>		
(55-68) <b>D</b>		
(39-54) <b>E</b>		
(21-38) <b>F</b>		
(1-20) <b>G</b>		
<i>Not energy efficient - higher running costs</i>		
<b>England &amp; Wales</b>	EU Directive 2002/91/EC	